



# Sailing Instructions for Dinghy Racing Season 2025-2026

## 1. GENERAL

These Sailing Instructions cover WSC Club Series races between April 2025 and March 2026. Races are governed by the Racing Rules of Sailing, 2025-2028 (RRS), the RYA prescriptions, Class Rules, WSC Notice of Race (NOR) and these Sailing Instructions. In the event of a conflict these Sailing Instructions shall apply.

## 2. SIGNING ON & OFF

- All boats must Sign On and Off (Finished) for each race. Sign On and Finished declarations will be made via the *SailEvent eTally* system. Registration for *SailEvent eTally* is available via a link from the Dinghy Racing page on the WSC website: warsashsc.org.uk.
- A responsible adult must supervise Sign On / Off for helms under the age of 18 and remain onsite for the duration of the race.
- After successful completion of the course helms must Sign Off by submitting a "Finished" declaration on *SailEvent eTally* by 22:00 the same day.
- Failure to Sign Off as described above will result in the boat incurring a 5% Personal Time Penalty for all races on that day.
- For safety reasons, a retiring helm must inform the Starter/Recorder either via the nearest Race Support Boat or directly in person immediately upon return to shore.
- Helms who have retired must submit a declaration of RTD on *SailEvent eTally* immediately.
- In the event of a *SailEvent eTally* system failure Helms shall Sign On/Off using paper declaration forms located at Lobster Quay.

## 3. SAFETY

**Race Support Boats:** The provision of a 'race support boat' is limited to such assistance, particularly in extreme weather conditions, as can be practically provided in the circumstances. Crews cannot expect a 'race support boat' to 'stand by' for an extended period.

**Personal Buoyancy:** **Personal buoyancy shall be worn at all times whilst racing.** Failure to comply will result in automatic disqualification from all races that day.

**Tow ropes:** All boats must carry a floating towing warp of at least 8mm in diameter and 10m in length, without any knots or additional attachments such as carabiners, or shackles. Failure to comply may result in disqualification from all races in a series.

**Navigation:** Southampton port bylaws require boats to keep clear of vessels using the main shipping channel. River Hamble bylaws require that boats do not impede larger vessels using the river. Such vessels shall rank as an obstruction and Part 2, Section C applies. Any boat contravening the bylaws may be disqualified.

## 4. RULES, NOTICES & CHANGES TO THE SAILING INSTRUCTIONS

Formal notices will be posted on the dinghy racing notice board in Lobster Quay, and the Dinghy Racing page on the WSC website: warsashsc.org.uk.

- RRS Rule 41 changed so that a capsized boat may receive assistance from a Race Support Boat and continue racing.
- RRS Rule 44.1 changed so that a boat may take a one turn penalty when she may have broken one or more rules of RRS Part 2 in an incident while racing.
- RRS Rule A4 changed so, at the Race Officer's discretion and after the first boat has finished, boats may be awarded points according to their observed position on the course.

## 5. SIGNALS MADE ASHORE

Starting sequence signals are indicated by lights displayed on the race box. Signals will normally be accompanied by a sound signal. Abandonment signals will be made at Lobster Quay or Shore House race box or on the Committee Boat as applicable.

## 6. SCHEDULE OF RACES & START TIMES

The schedule of races and start times are as listed in the sailing calendar published on the WSC website: warsashsc.org.uk.

## **7. START /FINISH LINES**

Club races will start from the Club Line except when races start from a Committee Boat in Cat Head Bay. The Club Line is marked by the transit of two posts with yellow triangular top marks located on, and behind the race box. The line stretches across the main channel from Shore House pontoon to pile number B6 on the outer pontoon on the Hamble side of the river. Boats must start and finish in the main channel. In the event of a general recall, the fleet recalled will restart 3 minutes after the last scheduled start in the normal starting sequence.

## **8. STARTING SEQUENCE**

The 3, 2, 1, Go, start sequence as described in RRS Rule 26 shall apply for all races. Starts will be at 3-minute intervals. Each fleet will normally have a dedicated start. Fleet starts may be combined at the discretion of the Race Officer, but courses and results will always remain fleet specific. Boats must keep clear of the start line until their fleet warning signal or risk disqualification.

## **9. COURSES**

Courses are as described in the 'Dinghy Racing Start Guide and Courses 2025-2026' document (Addendum A). The course to be sailed by each fleet, and the number of rounds, will be displayed on the board at the race box on Shore House jetty prior to the first preparatory signal. If code flag **L** is displayed, it denotes a special course has been set which will be displayed on a board on Shore House pontoon.

## **10. SHORTENED COURSE**

Affecting RRS 32, international code flag **F** flown adjacent to a mark indicates that boats should pass that mark on the required side and proceed to the finish line off the Shore House pontoon. Code flag **S** indicates finish 'here' in accordance with RRS 32.2.

Flags F & S flown simultaneously indicates the finish line shall be a transit of piles 6 and 7 that extends from Hamble Spit to Warsash Shore as shown in the diagram in Addendum B.

## **11. TIME LIMITS**

Amendment to RRS Rule 35: Boats must finish within 2h30m of their fleet start, or sunset, whichever is the earlier. Boats passing the finishing line after this time will be scored as DNF.

At the Race Officers discretion, boats trailing behind their fleet may be awarded points according to their observed position on the course. The Race Officer will inform such boats on the water that this SI has been applied.

## **12. PROTESTS**

Protests must comply with RRS 61.1 and shall be handed to the Race Officer, monthly coordinator or dinghy chairman or emailed to [protest@warsashsc.org.uk](mailto:protest@warsashsc.org.uk) within 60 minutes of the last competitor coming ashore. Protest forms are available at Lobster Quay and on the WSC website. If there are no protest forms available at Lobster Quay, the basic facts and details shall be provided on plain paper and then lodged as stated. These details should include: Race number and date. Your details: boat, sail number, name and contact details. Who else is involved: class, sail number, contact details. Informing the others: how and when the other boat(s) was informed of the protest. The incident: what happened, where & when.

## **13. ARBITRATION**

If a suitably knowledgeable independent person is available to act as an arbitrator, with agreement with the protestor and protestee an arbitration meeting may be held prior to a protest hearing for each incident resulting in a protest by a boat involving one or more rules of Part 2 or rule 31, but only if each party is represented by a person who was on board at the time of the incident. No witnesses will be permitted. However, if the arbitrator decides that rule 44.1(b) may apply or that arbitration is not appropriate, the meeting will not be held, and if a meeting is in progress, it will be closed. This complies with RRS Appendix T.

## **14. SCORING AND HANDICAPS**

The Portsmouth Yardstick system will be used. The Dinghy Committee may use their discretion to allocate adjusted PY numbers. The low point scoring system of RRS Appendix A will apply.

The duty team (Race Officer, starter/recorder and 'support boat' helm/crew) shall score average points of all the races sailed by that competitor.

Exceptionally, the Dinghy Committee may permit a second duty to cover the circumstance when a competitor is requested to forego sailing and undertake a duty in order to enable racing.

#### **15. CHANGING BOATS DURING A SERIES**

An owner/helm changing their boat part way through a series must inform the Dinghy Committee to have the results for both boats scored as a single boat, provided both boats are the same class of dinghy with the same Portsmouth yardstick number.

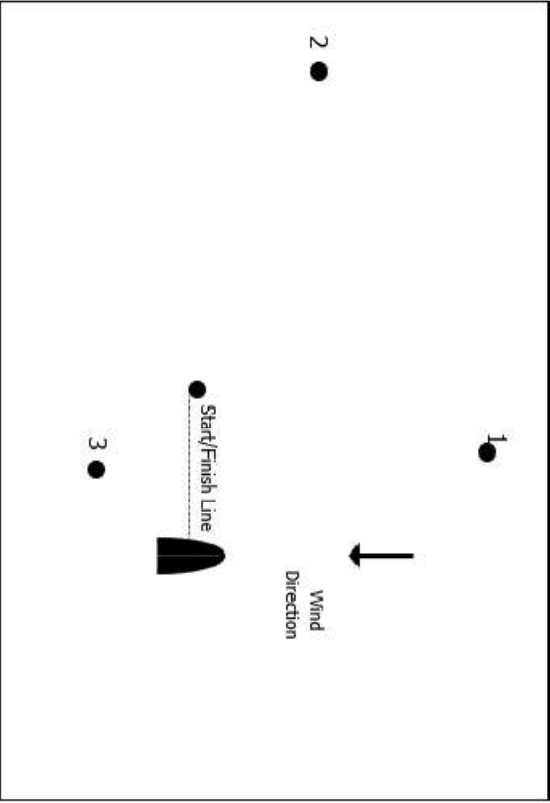
#### **16. CHANGING CREW DURING A SERIES**

A boat will be scored in a series if helmed by the same person in all races entered in that series.

#### **17. DISCARDS**

There shall be 3 discards if 8 or more races are completed in a series, 2 discards if 6 or 7, and 1 discard if 4 or 5 are completed.

**Outside Races**  
Committee boat will be at anchor in Cat Head Bay.



**Courses for Outside races**  
If no course letter is displayed then course A applies.  
Repeat the course until 'S' is flown.

A	B	C
Start	Start	Start
Mark 1 (P)	Mark 1 (P)	Mark 1 (P)
Mark 2 (P)	Mark 2 (P)	Mark 3 (P)
Mark 3 (P)	Mark 3 (P)	Start/Finish Line
Start/Finish Line	Start/Finish Line	
Mark 1 (P)		
Mark 3 (P)		
Start/Finish Line		



## Dinghy Racing Start Guide & Courses 2025 - 2026

Races are governed by the Warsash SC Notice of Race 2025-26,  
Sailing Instructions 2025-26 and published amendments.

### Schedule of Races & Start times

The indicative schedule of WSC races and start times are as listed in the sailing calendar published on the club website: warsashsc.org.uk

#### Mixed Fleet flags and PY splits for Club Line & Outside race starts

Fleet	PY	Flag
Fast	1033 or less	D
Medium	1034 - 1119	E
Slow	1120 or above	B

**Fleets starts may be combined at the discretion of the Race Officer**

#### Club Line & Outside race start sequence

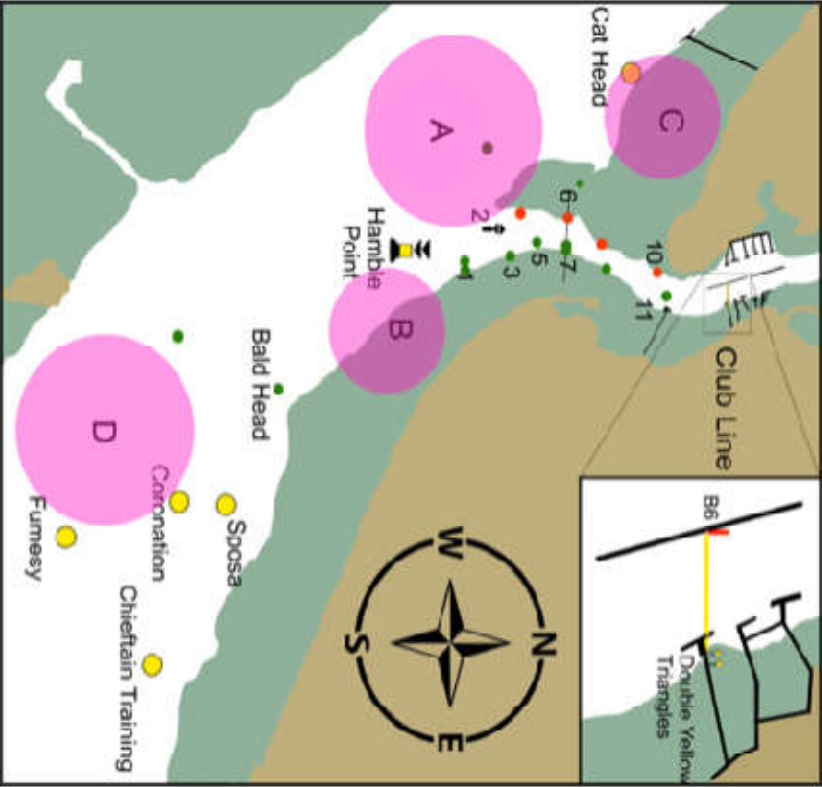
Time	Event	Flag	Signals	Sound	Light
-3 mins	Warning	'Class' Raised	One	One	Class 'On'
-2 mins	Preparatory	'p' Raised	One	One	p 'On'
-1 min		'p' Lowered	One	One	p 'Off'
0 mins	Starting	'Class' Lowered	One	One	Class 'Off'

- Fleets will start at 3-minute intervals. The warning signal will be displayed at the starting signal for the preceding class.
- Boats whose warning signal has not been made shall keep clear of the starting area.
- If a boat is over the line at the start an extra sound signal will be made and the X flag light will be illuminated.
- In the event of a general recall, the fleet recalled will restart after the last scheduled start in accordance with RRS 29.2.

## ADDENDUM A

### WSC DINGHY RACING START GUIDE AND COURSES 2025-6

Marks for dinghy races with Club Line starts



Flag		Meaning	H-Flag		Meaning
AP		Race postponed	N		Race abandoned
X		Boat(s) over line	1st Sub		General Recall
L		Special course. Check whiteboard on Shore House portoon			
S		Finish between boat flying flag S and the adjacent mark			
F		Pass adjacent mark and proceed to finish line			
S & F		Flown together Finish at line through Pile 5 and Pile 7			

Courses for dinghy races with Club Line starts

A	Start BUOY 11 (S) PILE 6 (S) CAT HEAD (S) PILE 10 (S) Finish	Start PILE 2 (P) PILE 3 (P) PILE 10 (P) Finish	C	Start BUOY 11 (S) PILE 1 (S) PILE 2 (S) Finish	D	HIGH WATER ONLY Start PILE 2 (S) CAT HEAD (S) PILE 10 (S) Finish
E	HIGH WATER ONLY Start PILE 10 (P) CAT HEAD (P) PILE 2 (P) Finish	Start PILE 2 (S) LAID MK A (P) HAMBLE Pt (P) PILE 5 (P) Finish	G	Start PILE 5 (S) HAMBLE Pt (S) LAID MK A (S) PILE 2 (P) Finish	H	HIGH WATER ONLY Start PILE 10 (P) CAT HEAD (P) HAMBLE Pt (P) Finish
I	Start HAMBLE Pt (S) CAT HEAD (S) PILE 10 (S) Finish	Start PILE 3 (S) BALD HEAD (S) HAMBLE Pt (S) Finish	K	Start HAMBLE Pt (P) BALD HEAD (P) PILE 3 (P) Finish	L	SPECIAL COURSE See board on Shore House jetty
M	AVOID LOW WATER Start PILE 3 (P) LAID MK B (S) HAMBLE Pt (S) LAID MK B (S) HAMBLE Pt (S) PILE 2 (S) Finish	Start PILE 5 (S) HAMBLE Pt (S) CAT HEAD (S) PILE 2 (P) Finish	P	Start PILE 2 (S) CAT HEAD (P) HAMBLE Pt (P) PILE 5 (P) Finish	Q	HIGH WATER ONLY Start PILE 2 (S) LAID MK C (P) CAT HEAD (P) PILE 2 (P) Finish
K	HIGH WATER ONLY Start PILE 2 (S) CAT HEAD (S) PILE 10 (S) PILE 2 (S) PILE 10 (S) Finish	Start HAMBLE Pt (P) SPOSA (S) LAID MK D (S) Finish	T	Start HAMBLE Pt (P) BALD HEAD (P) CORONATION (P) SPOSA (P) Finish	U	Start HAMBLE Pt (P) SPOSA (S) CORONATION (S) HAMBLE Pt (S) Finish
V	Start HAMBLE Pt (P) CHIEFTAIN TR. (S) FUMESY (S) Finish	Start HAMBLE Pt (P) SPOSA (S) CHIEFTAIN TR. (S) FUMESY (S) Finish	X	Start HAMBLE Pt (P) FUMESY (P) CHIEFTAIN TR. (P) SPOSA (P) Finish	Y	Start HAMBLE Pt (P) SPOSA (S) CORONATION (P) CHIEFTAIN TR. (S) FUMESY (S) BALD HEAD (S) Finish

1. The letter denoting the course will be displayed on the start line along with the number of laps for your fleet.
2. The part of the course in CAPITAL LETTERS is to be repeated until the number of laps displayed at the start have been completed. Marks written in lowercase are only rounded /passed once, at the start of the course or as the last mark of the course for the final leg to the finish.

## ADDENDUM B

### DIAGRAM OF PILE 6/7 FINISH LINE

